

OPSWAT™

Metascan®

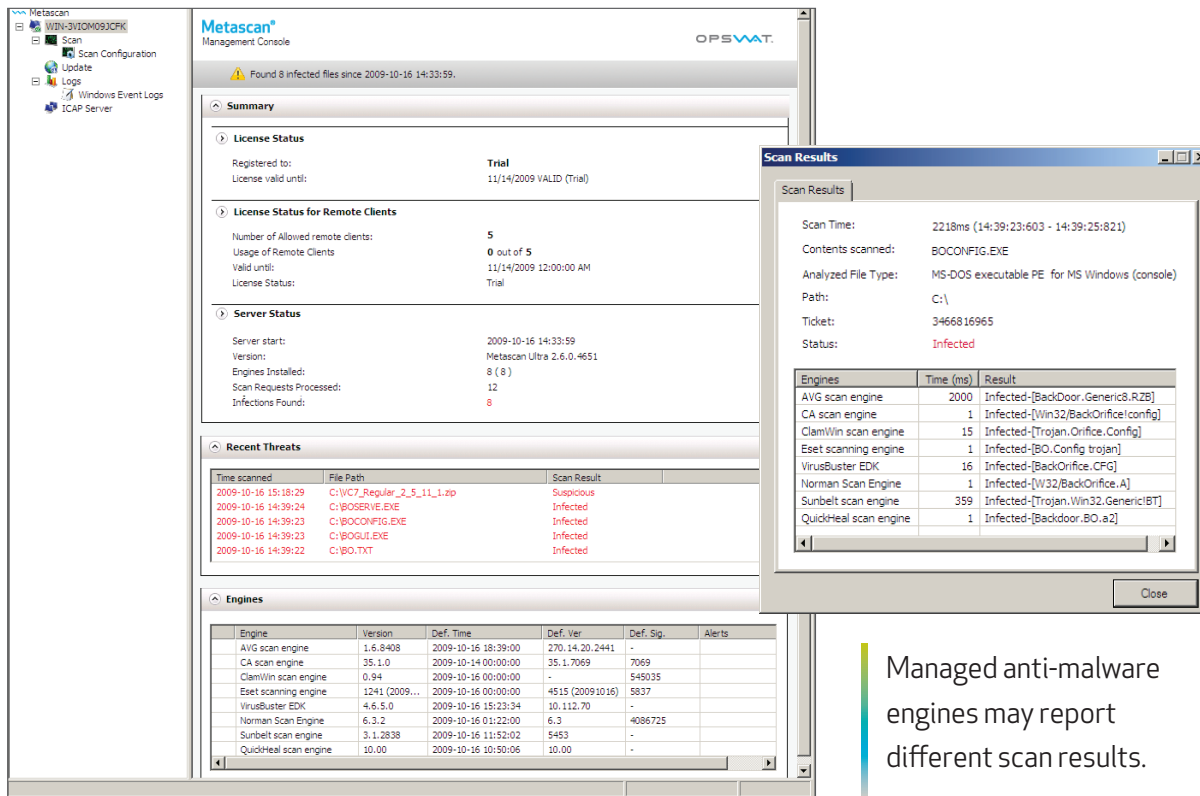
Your super antivirus and content filtering engine



Metascan®

Metascan is an application with a programming interface that enables I.T. professionals and software engineers to integrate multiple antivirus scanning capabilities into their proprietary solutions.

Metascan includes up to 30 built-in antivirus engines and supports integration with many others; allowing content security to be easily enhanced using multi-scanning. This “super antivirus engine” improves the likelihood of malware detection—a threat missed by one engine may be detected by one or more of the others. Metascan eliminates the potential headaches associated with sourcing, licensing, integrating and maintaining separate engines from multiple vendors, and adds numerous scanning and file management customization options.



Managed anti-malware engines may report different scan results.

Metascan is packaged to address different use cases:

Metascan® Ultra - For maximum protection and URL filtering

Metascan® Lite - For a balance between performance and protection

Metascan® Core - For users integrating their own separately licensed anti-malware applications

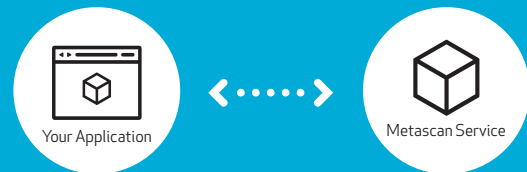
Key Features

- Easy evaluation and licensing
- Includes licenses for several built-in engines
- Compatible with dozens of anti-malware applications
- Designed for very high performance and scalability
- Scan files, folders, drives, and data streams
- Ability to extract many different archive types
- Integrated RAM drive to protect confidential data in the event of a re-boot during scan
- Boot sector scanning
- Easy auto and manual update of virus signature files
- Intuitive Microsoft Management Console
- Supports integration with various DBMS such as Microsoft SQL Server
- ICAP support (Internet Content Adaptation Protocol)
- Custom post actions for management of files after scan completion
- Custom engines such as a data loss prevention engine can be integrated to help control the flow of data

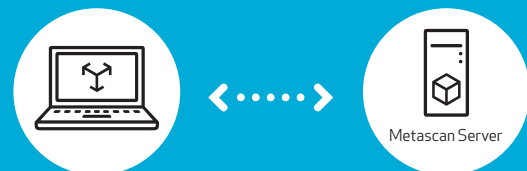
Use Cases


Local Metascan® deployment.

 Metascan® service embedded into your application



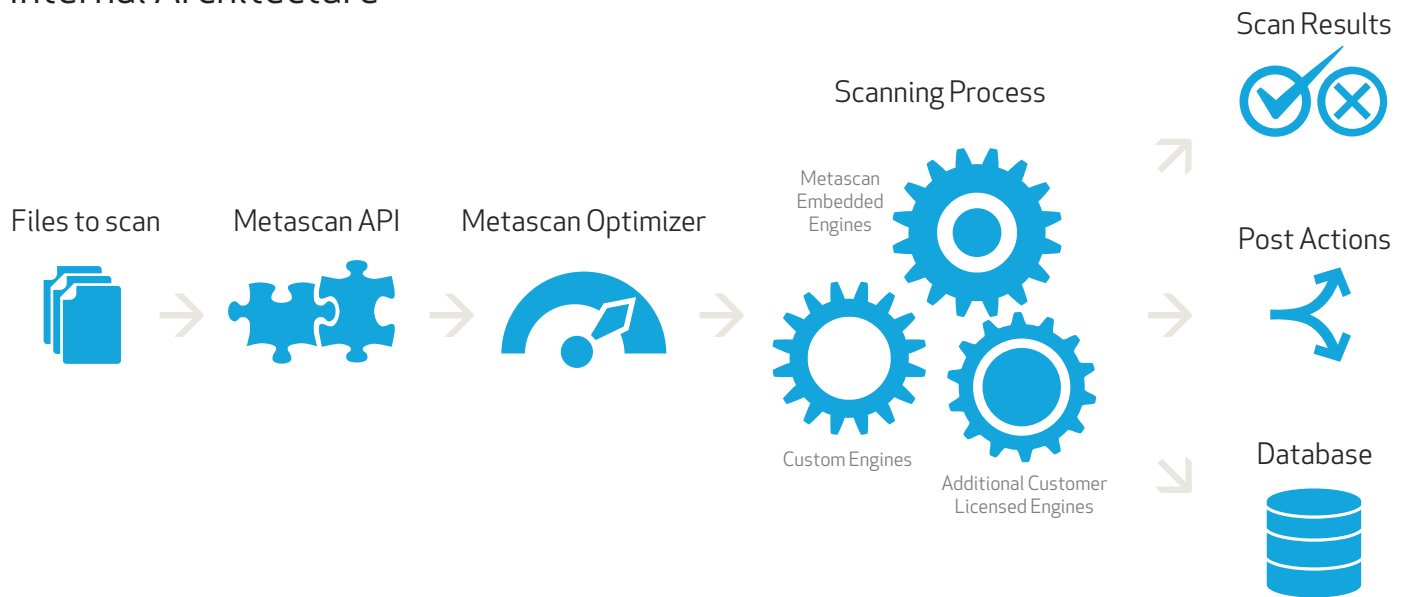
Remote Metascan® deployment.



 Metascan® Remote Client, allowing users to scan files on multiple servers with a remotely deployed Metascan® server using a single CLI.



Internal Architecture



Technical Details

LICENSED BUILT-IN ENGINES

- AVG Anti-Virus
- Total Defense Engine
- ClamWin Free Anti-Malware
- ESET NOD32 Anti-Malware
- Norman Virus Control
- Quick Heal AntiVirus
- GFI VIPRE Antivirus
- VirusBuster Anti-Malware SDK

ADDITIONAL PROTECTION

- URL filtering
- Additional customer licensed engines

AVAILABLE INTERFACES

- COM interface
(TLB files available)
- JAVA interface
- Command line interface

SAMPLE PROJECTS AVAILABLE IN

- Visual C++
- Visual Basic .NET
- C#
- ASP.NET
- PHP
- JAVA

SUPPORTED OPERATING SYSTEMS*

- Windows XP
 - Windows 2003 Server
 - Windows Vista
 - Windows 2008 Server
 - Windows 7
 - Windows 2008 R2 Server
- (*supports both 32 and 64 bit OS)

SUPPORTED ARCHIVE TYPES

zip, gzip, bzip2, z, 7z, tar, jar, rar, cab, iso, sfx and many more...

SUPPORTED FILE TYPE CATEGORIES

Executables, archives, Office documents, text files, PDF, images, media (audio/video)

RECOMMENDED HARDWARE

- CPU dual core 1.8GHz or higher
- 4GB RAM
- 2GB Free hard disk space

Contact Information

OPSWAT, Inc.
640 2nd Street, 2nd Floor
San Francisco, CA 94107

415.543.1534 sales
415.543.1282 fax
www.opswat.com/products/metascan



ISV/Software Solutions