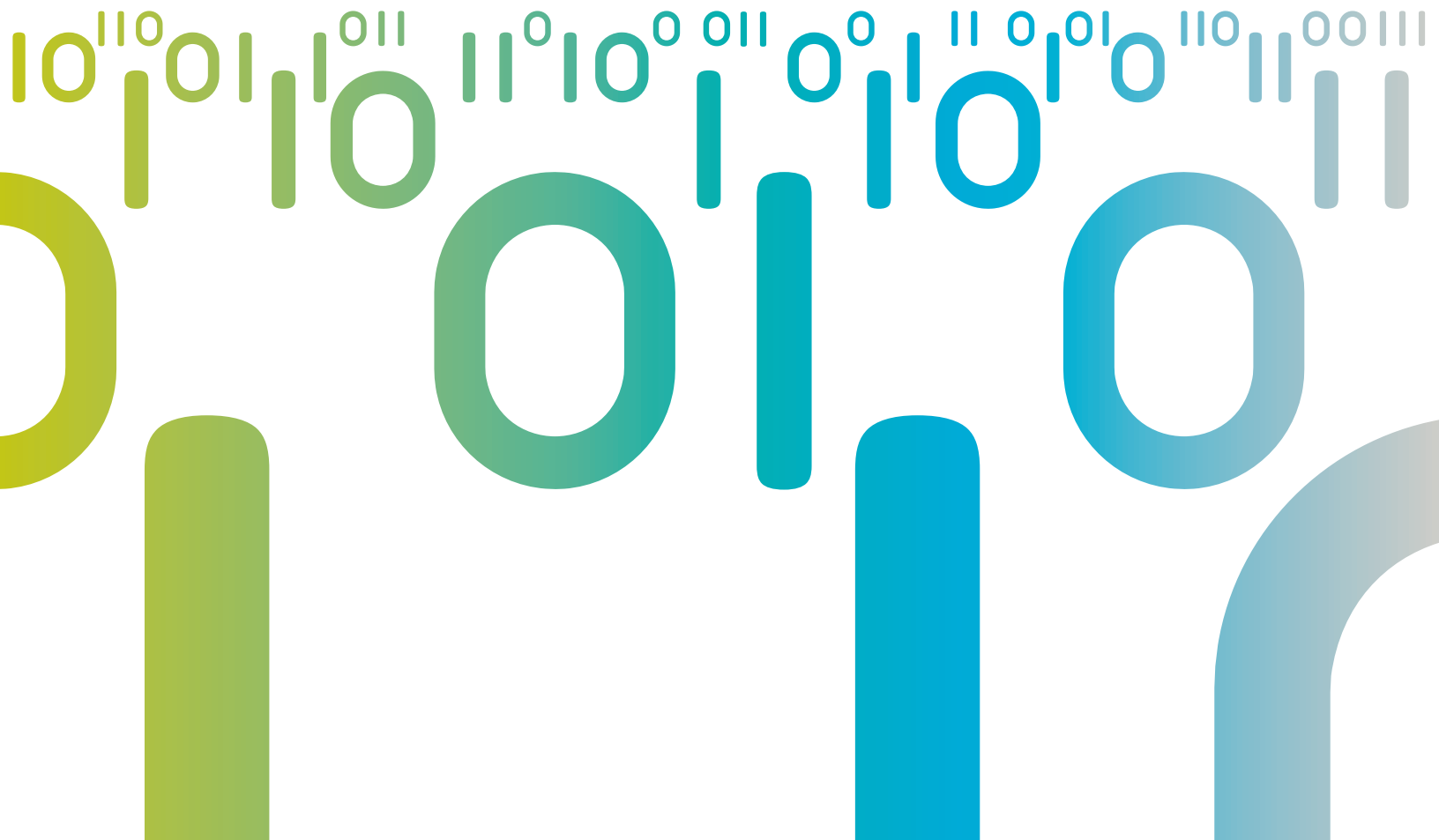


MetaDefender™ for Secure Access

Your high-speed endpoint scanning solution



MetaDefender for Secure Access

Enforcing network security requires an assurance that an endpoint machine is free from malevolent active memory modules prior to access.

MetaDefender for Secure Access (MD4SA) is a fast, lightweight (~100kb) memory scanning tool that is ideal for scanning endpoints prior to a network, web or server access.

MD4SA quickly scans the memory of the endpoint using multiple antivirus engines. MD4SA complements an active antivirus application on an endpoint system, and network security is enhanced through multi-scanning technology to ensure that active processes are checked before admittance is granted.

MD4SA's "super antivirus engine" improves the likelihood of catching a malicious process module. A threat missed by one engine may be detected by one or more of the others. And because scanning is optimized for multiple engines, MD4SA is able to complete a memory scan in only seconds.

Supported operating systems include Windows, Mac OS X, Linux and several mobile operating systems.



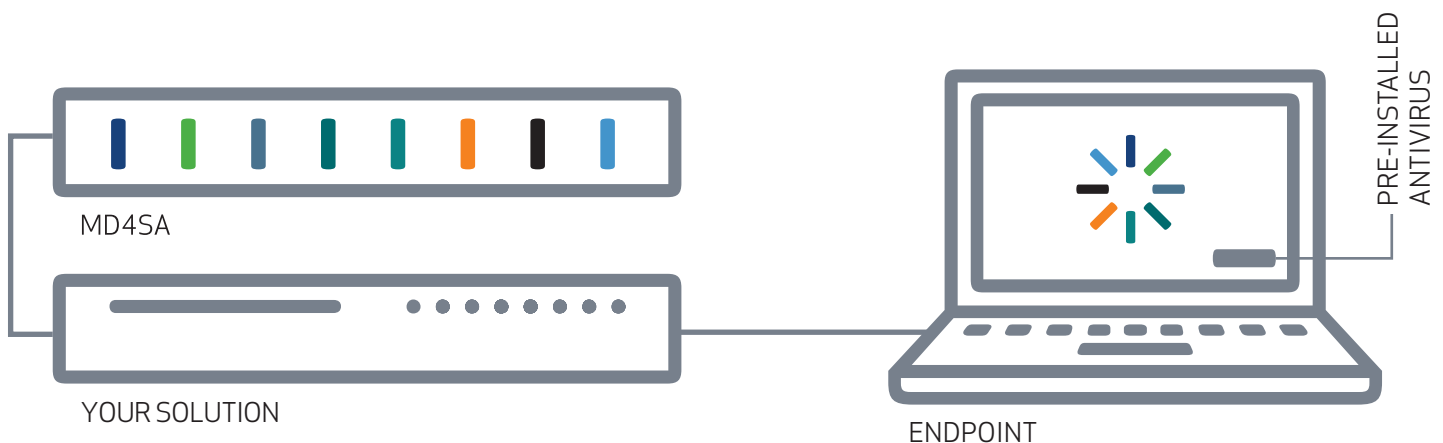
ClamWin



NORMAN

Quick Heal

VirusBuster



Why MD4SA?

- No single antivirus product can detect all threats - MD4SA adds several scanning engines to your solution
- Able to perform an extremely fast memory check on endpoints accessing a network
- Added security on any platform
- Scanning the complete file system prior to a logon using the pre-installed antivirus solution is too slow
- Endpoints may not have an antivirus solution installed

Features

- Includes licenses for multiple built-in engines
- Server side logging to track scanning history
- Compatible with any pre-installed antivirus application

Benefits

- Able to scan the memory of nearly any operating system
- Easy signature updates using internet updates or manual updates in a locked-down environment
- A client accessing the host network can be scanned even in the absence of an endpoint antivirus application
- Lightweight and fast

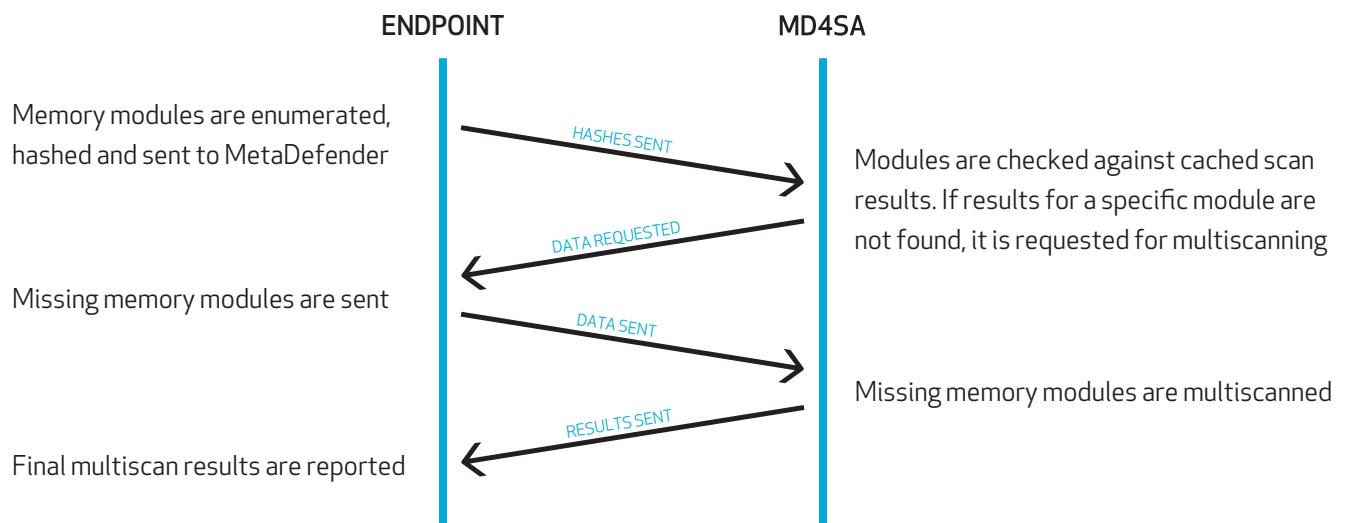
Single Engine Detection Rate*

	worms	backdoors	trojans	other
AV Product 1	88%	77%	70%	63%
AV Product 2	81%	36%	47%	62%
AV Product 3	48%	66%	46%	54%
AV Product 4	57%	56%	51%	42%
AV Product 5	57%	58%	51%	42%
AV Product 6	63%	59%	54%	42%
AV Product 7	84%	59%	62%	69%
AV Product 8	56%	72%	65%	48%
AV Product 9	45%	41%	26%	27%
AV Product 10	77%	37%	40%	34%
AV Product 11	85%	51%	54%	57%
AV Product 12	10%	54%	36%	29%
AV Product 13	15%	44%	42%	40%
AV Product 14	64%	58%	53%	50%
AV Product 15	27%	37%	35%	30%
AV Product 16	48%	65%	46%	52%

* Source: <http://www.av-comparatives.org>

As this recent performance test indicates no one antivirus engine is able to detect every threat. A product with several different engines and update patterns is ideal for protecting your network from malicious processes.

How MD4SA Works

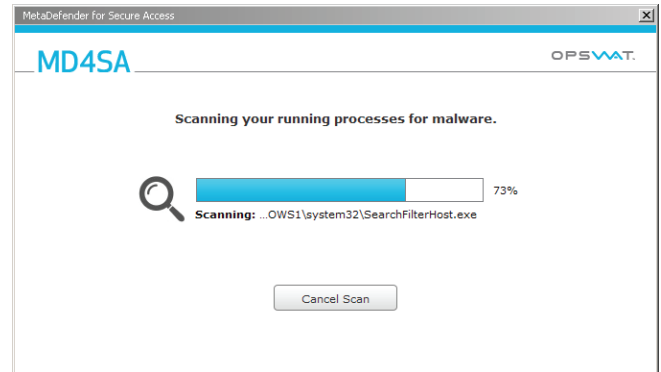


MetaDefender™ for Secure Access

Deployment Options

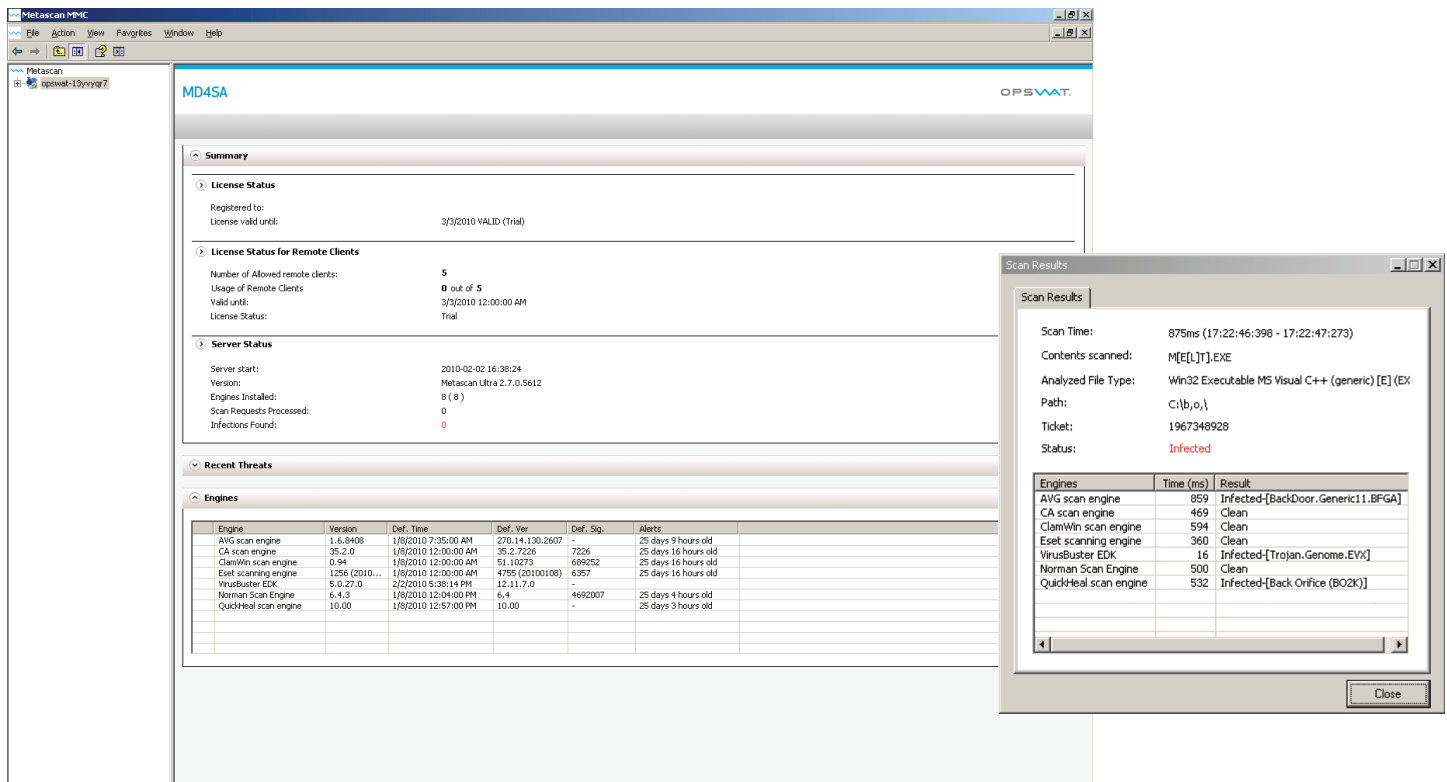
MD4SA features plug-ins for industry-standard devices and easy integration with SSL VPN and NAC solutions from Microsoft, Cisco, Juniper, F5, SonicWALL, Avaya and others.

For the end user, it's as simple as installing the client and letting it run during login. This lightweight utility instantly returns results via API or an optional user interface.



MD4SA CLIENT

MD4SA Management Console

A screenshot of the Metascan MMC management console. The main window shows the "MD4SA" summary page with sections for "License Status", "License Status for Remote Clients", and "Server Status". A "Recent Threats" section is also visible. An inset window titled "Scan Results" shows details for a scan of "M[E][L]T.EXE", including the scan time, analyzed file type, path, ticket number, and status (Infected). A table lists the engines used in the scan and their results.

Engines	Time (ms)	Result
AVG scan engine	859	Infected-[BackDoor.Generic11.BFGA]
CA scan engine	469	Clean
ClamWin scan engine	594	Clean
Eset scanning engine	360	Clean
VirusBuster EDK	16	Infected-[Trojan.Genome.EVX]
Norman Scan Engine	500	Clean
QuickHeal scan engine	532	Infected-[Back.Orifice (BO2K)]

MD4SA Implementation Demo

A demonstration of the speed and power of MetaDefender for Secure Access is available on the web at: www.metadefender.com